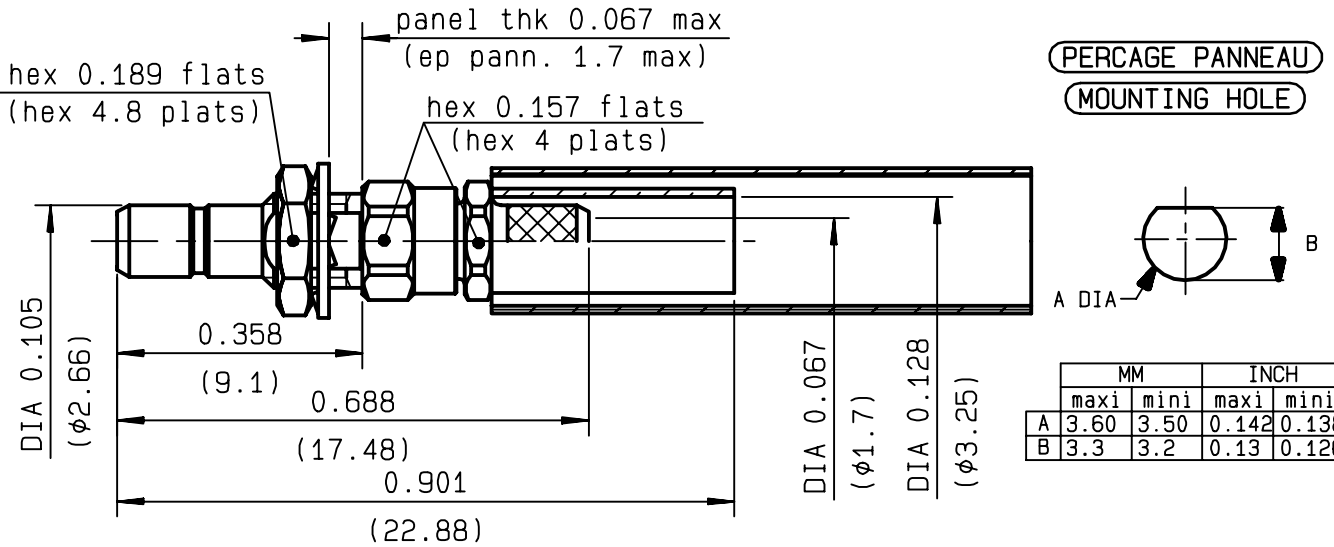


**STRAIGHT BULKHEAD JACK CRIMP TYPE  
CABLE 2.6/50 S**

**R203.317.000**  
**SERIES SSMB**



NOMINAL IMPEDANCE	<b>50</b> Ω
FREQUENCY RANGE	<b>0-4</b> GHz
TEMPERATURE RATING	<b>-65/+165</b> °C
V.S.W.R	<b>1.25</b> + <b>.03</b> x F(GHz)Maxi
RF INSERTION LOSS	<b>0.30</b> √F(GHz) dB Maxi
VOLTAGE RATING	<b>175</b> Veff Maxi
DIELECTRIC WITHSTANDING VOLTAGE	<b>500</b> Veff Mini
INSULATION RESISTANCE	<b>1000</b> MΩMini
HERMETIC SEAL	<b>NA</b> Atm.cm <sup>3</sup> /s
LEAKAGE (pressurized only)	<b>NA</b>
MECHANICAL DURABILITY	<b>500</b> Cycles
WEIGHT	<b>1.1</b> gr
SPECIFICATION	

CABLES : **KX 22A**  
**RG 188**  
**RG 316**

OTHERS CHARACTERISTICS

CABLE RETENTION	<b>90</b> N Mini
CENTER CONTACT RETENTION	
Axial force - mating end	<b>8</b> N Mini
Axial force - opposite end	<b>8</b> N Mini
Torque	<b>NA</b> cm.N Mini
RECOMMENDED TORQUES	
Mating	<b>NA</b> cm.N
Panel nut	<b>25</b> cm.N
Clamp nut	<b>35.6</b> cm.N

CONNECTOR PARTS	MATERIALS	FINISH	(all values are given in micrometers)
BODY	BRASS	GOLD 0.5 OVER NICKEL 2	
OUTER CONTACT			
CENTER CONTACT	BERYLLIUM COPPER	GOLD 1.3 OVER NICKEL 2	
INSULATOR	PTFE	-	
GASKET		-	
OTHERS PIECES	BRASS	GOLD 0.5 OVER NICKEL 2	

ISSUE	CREATION DATE	FILE PART-NUMBER
<b>9938A00</b>	<b>26/03/1997</b>	<b>97-0400-525</b>



**RADIALL®**

RAFFAELI

The information given here is subject to change without notice.  
Design changes may be in order to improve the product .

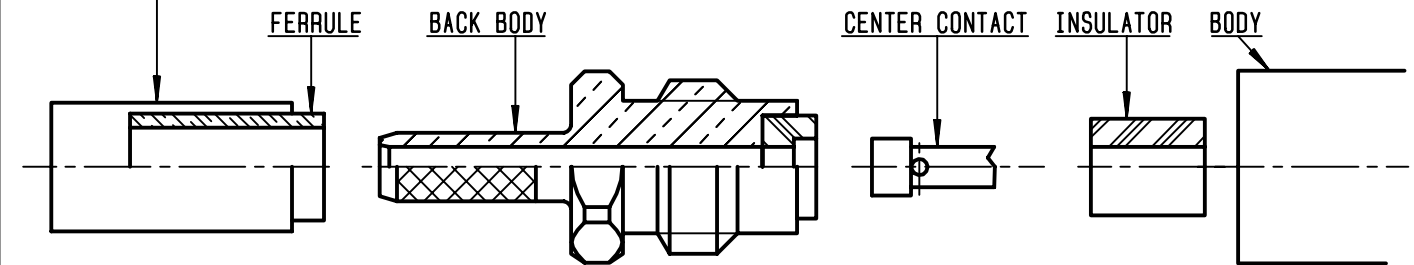
*Connect to the future*



**R203.317.000**

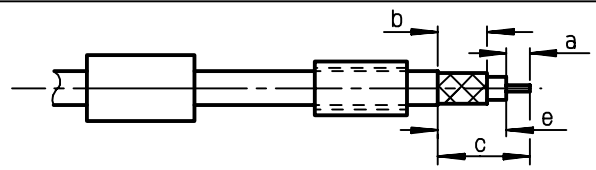
ISSUE 9938A00 SERIES SSMB

HEATSHRINK SLEEVE



①

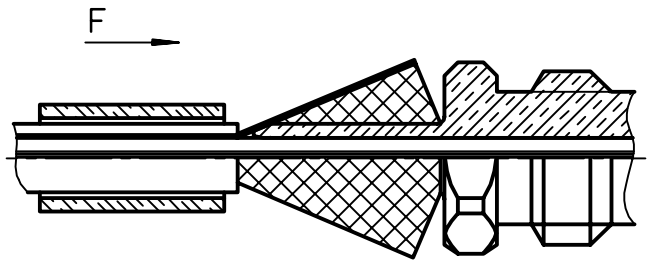
Slide the ferrule and heatshrink sleeve onto cable.  
Strip the cable.  
-  
-



Stripping	a	b	c	d	e
inch	0.161	0.161	0.469	0	0.307
mm	4.1	4.1	11.9		7.8

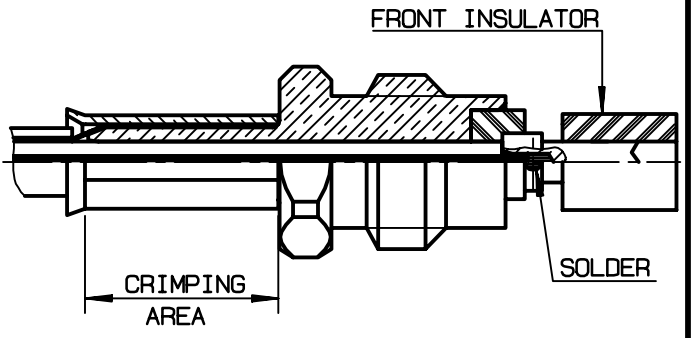
②

Fan the braid.  
Slide the back body between dielectric and braid.  
Slide ferrule over the braid ( in direction F )  
-  
-



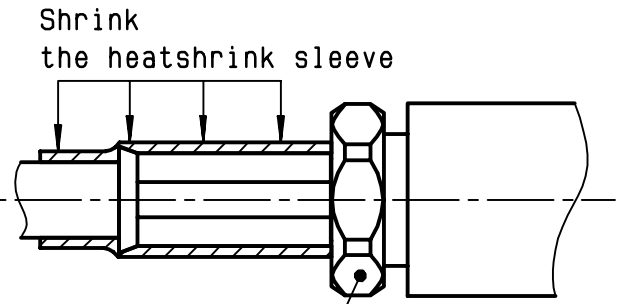
③

Crimp the ferrule with crimping tool R 282 211 000 ( Hex. : .128 ) or crimping tool R282 293 000 ( M22520/5-01 ) and dies R282 235 003 ( M22520/5-03 )  
Mount the center contact.  
Solder the center contact.  
Mount the front insulator.  
-  
-



④

Screw sub-assembly into the connector body.  
( recommended coupling torque 3.15 Inch.lb )  
Slide sleeve over ferrule and heatshrink in place.



Hex. : .157 /flats